



bettens-eric

Arranger, Composer, Teacher

Belgium, Courcelles

About the artist

Eric BETTENS, musician and composer, is a true music lover. A subtle blend of electronic and acoustic sounds sometimes embellished by sounds captured in Nature, the works he composes not only bring the admiration of the public and professionals alike, but have also won numerous awards.

In 2001, the musical career of Eric BETTENS really began when Luc BAIWIR, the famous composer from Liège, convinced him to present NYDHIS - a composition in three parts - at the World Festival of Underwater Pictures in Antibes France. The jury awarded him the François de Roubaix prize, the highest award of the festival.

Eric's style both asserted itself and seduced listeners. From 2002, orders for his work flowed in, constantly. In just a few years, he composed the music for over thirty films and documentaries, including notably, those of Danny VAN BELLE and Mickaël AW; he also took part in the evaluation of several music notation software programmes.

On three occasions, Eric BETTENS was invited by Michael AW to be a jury member at the Celebrate the Sea festival in Singapore, where he gave also two concerts at Suntec City, and in Manila in the Philippines, where several works of his were performed in the closing concert in the presence of former Presiden... (more online)

Personal web: <http://www.eric-bettens.com>

About the piece



Title:	Paradoxe
Composer:	bettens-eric
Licence:	Bettens Eric (c) All rights reserved
Instrumentation:	Piano solo
Style:	Classical

bettens-eric on [free-scores.com](http://www.free-scores.com)

<http://www.free-scores.com/Download-PDF-Sheet-Music-eric-bettens.htm>

- Contact the artist
- Write feedback comments
- Share your MP3 recording
- Web page and online audio access with QR Code :



This work is not Public Domain. You must contact the artist for any use outside the private area.

PIANO

PARADOXE

Eric BETTENS

♩ = 92

7

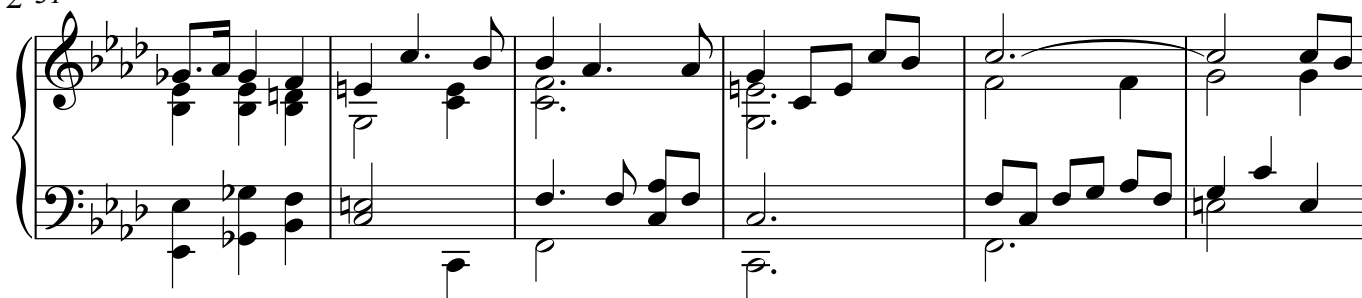
13

19

25

p *mp* *mf*

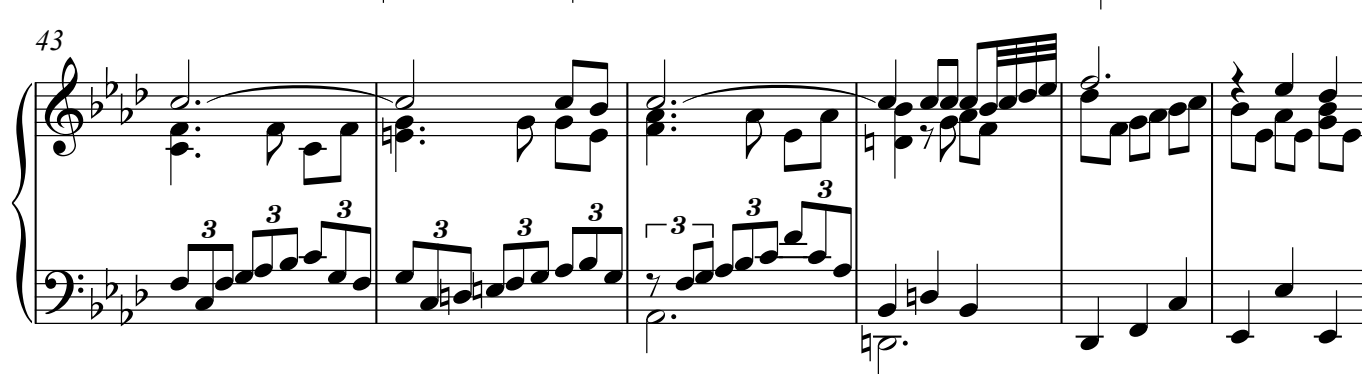
2 31



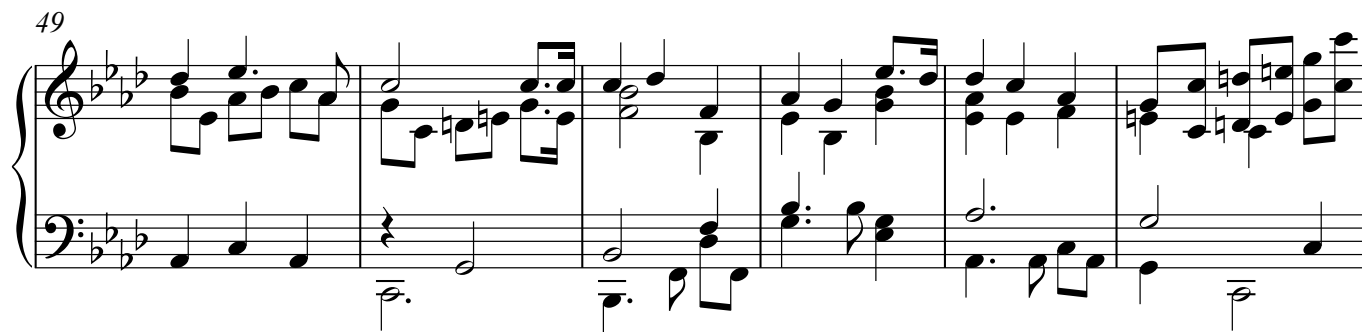
37



43



49



55



61



67

73 $\text{♩} = 84$

79

85 $\text{♩} = 102$

91

97 **rall.** $\text{♩} = 84$

4 103

109 **accel.** ♩=92

115

121 **rit.**

4'07"